

> architecture

# INTERNATIONAL



thomson  
adsett

# Introduction

ThomsonAdsett is an international architectural design practice in Australia and Southeast Asia, with studios throughout Australia.

ThomsonAdsett has been in business for almost 50 years. We are leaders and designers of connected architectural solutions. Not only do we advise on business models for our clients, we also consider factors such as site choice and cost viability at the start of a project. Clever planning can make a project not only economical, but also ensure it lasts well into the future.

More and more, we are seeing architecture projects now have multi-purpose functions. Commercial spaces are increasingly paired with residential or leisure buildings, and education with health or seniors living. Our strong understanding of the current trends and needs within each sector gives us insight into the possibilities of integration.

As a team, we need to keep learning and adjusting to a rapidly-changing future. Our team is committed to excellence in design, and our aim is to be responsive and one hundred per cent agile, so our clients continue to benefit now and into the future.

Chris Straw, Architect / Partner

Total global staff

88

Years in business

49

Studio locations

5

Project locations

18





We work with you every step of the way to realise your vision, and to meet the current and future needs of your customers.



# Why us?

## More than architects



ThomsonAdsett has the reach to undertake major health care, aged care, seniors living, education, community, retail, commercial, resort and leisure projects across the globe. With our cross-sector design experience, we offer international best practice and create project-specific, state of the art methodologies to allow us to design architecturally complex projects.

At ThomsonAdsett, we have an extensive international business network of seniors living and health care operators, hospitality and retail operators, education and workplace specialist, investors, service providers and consultant connections.

We help connect businesses by providing link management services; where people and opportunities are brought together to create successful business outcomes.

We have a long history of translating our seniors living and health care design knowledge and experience into innovative buildings.

We believe that our architecture responds to, and focuses on, the people who use the facilities or services we design. Our skill and knowledge of overseas markets means we design to suit the cultural needs of each project.

We have delivered a full spectrum of services in cooperation with private and government clients in Malaysia, Singapore, Thailand, China, Hong Kong and most recently, across Dubai and New Zealand.



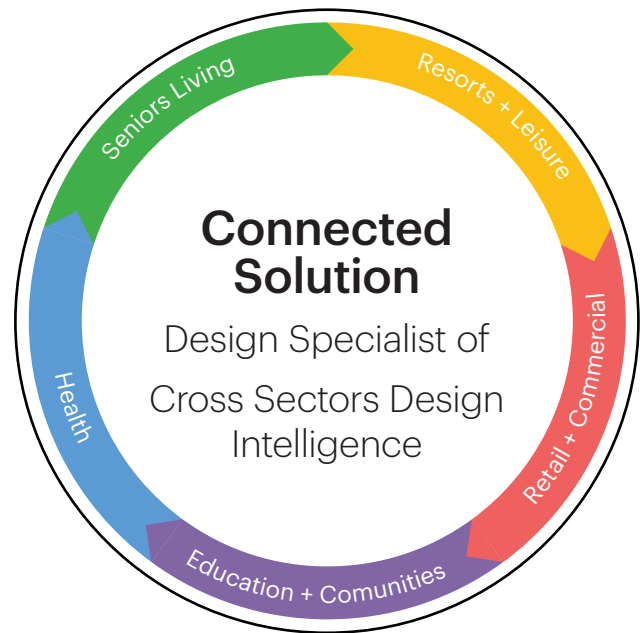
# Glocalisation

## Confronting global changes

To be successful and competitive in today's rapidly changing market place, health and aged care facility planners need to address the enormous changes and trends confronting hospitals, aged care facilities and seniors living options. The rising cost of health care, the changing nature of disease patterns and the emphasis on high quality health care delivery are major forces shaping today's planning efforts. These forces, as well as advancements in technology have created rapidly changing environments within healthcare and seniors living facilities.

Companies want their health and aged care business to be efficient and cost effective, where design and function interact for maximum productivity with minimum risk. Your business is the delivery of care services, ours is to find the most relevant development options and service outcomes, then provide the building envelope which allows delivery of these services efficiently, effectively and profitably. The care services facility development process should respond to changing trends and offer alternative opportunities for appropriate solutions. When the decision is made to expand a facility by either building a new complex or remodelling existing areas, a well-organised plan should be developed so that both current needs and future demands will be addressed.

Our design philosophy is based first and foremost on a very strong commitment to the needs of the seniors - to an understanding of ageing, its joys and fears, and of the vital role that physical surroundings play in the lives of senior citizens. We have developed a deep understanding of the challenges that face our dedicated health and aged care providers and retirement operators on a daily basis, and of the whole range of complex issues that surround the person needing care, and



lifestyle options, at all levels. It is this commitment which has underpinned the great depth of experience that ThomsonAdsett has developed in the industries of Health Care, Aged care and Retirement Living in Australia and overseas.

To execute this process, glocalise experience in health planning, strategic master planning, architectural management, project procurement alternatives and budget management at international and local levels is needed with full knowledge of local markets, local conditions and environment.

ThomsonAdsett is not tied to any particular local partner when working outside Australia. We work with the best-selected partners from the architectural and Care Service industries, and client recommendation, in each country to ensure the best outcomes for our clients.

**David Lane, Chairman Emeritus, Partner,  
2018 Global Ageing Influencer Ageing Asia**



Dr Amy Khor, Senior Minister of State, Ministry of the Environment and Water Resource & Ministry of Health, Republic of Singapore presented ThomsonAdsett's David Lane the 2018 Global Ageing Influencer Award in honour of his outstanding achievements as one of the top global influential thought leaders driving innovation and changing the future of ageing

## Awards

**2018 Global Ageing Influencer Ageing Asia Pte Ltd**  
David Lane

**2017 Australian Institute of Architects New South Wales Architecture Award for Educational Architecture, Commendation for Sustainable Architecture, plus shortlisted for COLORBOND® Award for Steel Architecture**  
Charles Sturt University Engineering Building

**2017 Finalist 5th Asia Pacific Eldercare Innovation Award – Best Silver Architecture**  
Streeton Park & Astana Duta Residential & Seniors Living Development

**2016 Winner Excellence in Design award (Neighbourhood and Strip Centres) Property Council of Australia Retail Awards**  
Skygate DFO, Cornubia Shopping Centre (Finalist)

**2016 Learning Environments Australia A4LE Commendation Renovations/Modernisations over \$2M**  
CSU Engineering Building, Bathurst New South Wales

**2016 Australian Institute of Architects Queensland Regional Commendation**  
Anglican Church of St James the Fisherman, Lammermoor Beach

**2016 Finalist 4th Asia Pacific Eldercare Innovation Award – Best Silver Architecture**  
St Paul's Residential Aged Care & Shuangqiao Golden Heights Seniors Home

**2015 Queensland Retail Property Awards Finalists**  
Neighbourhood and Strip Centres under 10,000 square metres & Bulky Goods Warehouse Centres: Brisbane Service Centre, Marsden on Fifth & Woolworths Meadowbrook





Managing Director, Chris Straw at the Australian Trade Commission's Australia Week in China, 2015

## Industry engagements

- Australian Capital Territory Health
- Australian Trade Commission
- Assunta Hospital
- Azzura Corporation
- Bank South Pacific
- Booroongen Djugun
- Challenge
- CPRAM Group
- Gold Age
- Goldis Berhad
- Hong Kong Hospital Authority
- Hong Kong Architectural Services Department
- Hong Kong Housing Society
- Lamana Developments
- Lascorp Development Group
- Ministry of Health Singapore
- MOHH
- Port Moresby General Hospital
- Prime Constructions for Crystalbrook Collections
- Pudong Hospital
- Seventh-Day Adventist Corporation (HK) Limited
- Singapore Government
- St Paul's Hospital Hong Kong
- St Teresa's Hospital Hong Kong
- Star Gardens
- Sunway Medical
- Tsuen Wan Adventist Hospital
- Tung Wah Group of Hospitals
- Yu Feng

## Government connections

- Australian Government Department of Education and Training
- Ballina Shire Council
- Byron Shire Council
- Calliope Shire Council
- Central Queensland Hospital and Health Service
- Clarence Valley Council
- Department of Health Queensland
- Department of Housing and Public Works Queensland
- Department of Infrastructure, Local Government and Planning Queensland
- Department of Transport and Main Roads, Queensland
- Education Queensland
- Fraser Coast Regional Council
- Gladstone Regional Council
- Health Infrastructure New South Wales
- Health Projects International
- Health Service Queensland
- Healthscope
- Hong Kong Hospital Authority
- Hong Kong Housing Society
- Housing New South Wales
- Lismore City Council
- Metro North Hospital and Health Service Queensland
- Ministry of Health Singapore
- Northern New South Wales Local Health District
- New South Wales Government
- New South Wales State Emergency Services
- Penrith City Council
- Port Moresby General Hospital
- Queensland Government
- Rockhampton Regional Council
- Singapore Government
- Urban Redevelopment Authority of Singapore
- Singleton Council
- South Burnett Regional Council
- Ministry of Health Malaysia
- Kuala Lumpur City Council

- > SENIORS LIVING
- > HEALTH
- > EDUCATION + COMMUNITIES
- > RETAIL + COMMERCIAL
- > RESORTS + LEISURE
- > MASTER PLANNING







# Seniors Living

ThomsonAdsett is one of the world's largest architecture firms specialising in seniors living, and brings 35 years of local and global experience to your project.

We design all types of accommodation from small scale independent living developments to end-of-life and hospice homes. We work with you to create strategies which benefit all business models, and consider your existing and future needs.

Our designs reflect a unique understanding of industry and client needs, as well as the impact physical surroundings have on the lives of the elderly, and on vulnerable people.

We draw on our other sectors including retail, education and health, to design integrated communities that suit any brief.

Through our Studying & Advancing Global Eldercare (SAGE) tours, we have travelled to over 400 global seniors living organisations. This brings the latest information on trends, facilities and products to your project.

Our staff are actively engaged in major national and international industry associations, and are represented on several boards. This industry contribution is unlike that of any other design firm.

Our team produces policy-driven solutions that work across multiple states of Australia as well as in international markets. In every case, we are passionate about producing seniors housing that is home.









## Jin Wellbeing County

Rangsit Seniors Living and Hospital is a master plan consisting of 4,000 independent living units, 200 aged care beds and an acute hospital with 200 acute beds and 200 step-down beds.

The Rangsit Hospital Aged Care and Retirement Village project is located on a very challenging site nearly 2km long only a maximum of 200m wide. In addition, the design also has to combat the threat of flooding on the site. Service and transport spines run along the site at low level, with the services spine doubling as a stormwater drainage swale. Pedestrian connections between buildings are established at the upper levels, utilising landscaped terraces.

The hospital site occupies a 200m length of the site at the eastern end adjacent to commercial facilities on the road frontage.

The retirement living component is punctuated by community facilities and open communal space along the length of the site, breaking the accommodation into clusters of varying densities.

### Client

Thonburi Healthcare Group Public Company Limited

### Location

Phahonyothin Road (Rangsit), Klong Nheung Sub-district, Klong Luang District, Pathum Thani, Bangkok, Thailand

### Services

Architecture

### Timeframe

Under development 2016





## Astana Duta

ThomsonAdsett is currently working on the concept design for a major new integrated residential and senior living development in Kuala Lumpur, Malaysia for Goldis Berhad.

The site is approximately 13,7000 square metres and will feature a mix of high and low rise buildings, including standard residential apartments, with independent living units, along with retail, wellness and community facilities, rooftop gardens, landscaped courtyards and resort-style swimming pool.

### **Client**

Goldis Berhad

### **Location**

Bukit Ledang, Kuala Lumpur, Malaysia

### **Services**

Architecture

### **Timeframe**

Under development 2017



## Rei Seraya Residence

This development collocates residential aged care with independent living, each with discrete entrances and access. The aged care component comprises 90 stepdown beds and 120 long term care beds. There are 156 independent living apartments complemented with shared lifestyle amenities. It is located centrally in Ampang, Kuala Lumpur, Malaysia.

It is resident focused and brings accommodation for the elderly in Malaysia in line with world's best practices. They comprise households of 10 singles rooms with ensuites. Each household accommodates individual plating kitchens, living and dining areas, making them as homelike as possible.

Independent living apartments are community focused. They suit residents who realise that their current homes are no longer suitable for their lifestyles at that point in their lives. They seek to address social isolation, security and convenience whilst maintaining regular daily lifestyles. Apartments are designed for ageing in place where care services may be delivered into apartments if and when required.

### Client

Pelaburan Hartanah Berhad (PHB)

### Location

Jalan Ampang, Ampang, Kuala Lumpur, Malaysia

### Services

Architecture

### Timeframe

Ongoing





## Sungai Penchala Residences

This development is an excellent example of connected solutions. Being adjacent to an acute hospital, it integrates a medical mall, an aged care offering, independent living apartments and a variety of community spaces.

Its aged care component comprises 210 long term care beds and 60 care apartments, all designed around small house models, in line with world's best practices.

Its 210 independent living apartments are designed to suit residents accustomed to outer suburban lifestyles, hence vast communal areas with views to surrounding forest and highlands. These apartments are designed to encourage social interaction. They suit residents who realise that their current homes are no longer suitable for their lifestyles at that point in their lives. They seek to address social isolation, security and convenience whilst maintaining regular daily lifestyles. Apartments are designed for ageing in place where care services may be delivered into apartments if and when required.

### **Client**

Pelaburan Hartanah Berhad (PHB)

### **Location**

Sungai Penchala, taman tun Dr Ismail, Kuala Lumpur, Malaysia

### **Services**

Architecture

### **Timeframe**

Ongoing



## Honghu Seniors Living

The project is located at the core area of the west wing of Xinghan New District, Hanzhong City.

The project was designed with the 4H concept as it's core planning philosophy. The physical planning of the site was inspired by traditional Chinese planning principles and the introduction of water as a common feature is a characteristics which filter through the project via a series of recreational lakes and courtyards. The aim of these water features is to create an open and integrated community which harness the therapeutic quality of water.

The architectural style of Han architecture is interpreted as a modern interpretation to draw upon it's unique cultural history of the site into our modern world. The aspiration of the project is to create a benchmark international nursing home for the northwest of China.

### Client

Xinghan Planning Bureau

### Location

Xinghan New District, Hanzhong, China

### Services

Architecture and Interior Design

### Timeframe

Design completed 2017









## Shuangqiao Golden Homes

Shuangqiao Golden Homes is located close to the 4th Ring Road East of Beijing. It comprises 350 independent living apartments with a mix of studios as well as one and two bedroom apartments. The site also features a 60-bed geriatric hospital, with the amenities related to independent living themed around 'festivals'.

Shortly after its launch in 2017, this development attracted the highest sales rate to date of any seniors living facility in China.

Its community-focused design provides inviting settings for social groups of all sizes, and this feature is immediately evident on entering the building.

### Client

Landgent Group

### Location

Beijing, China

### Services

Architecture

### Timeframe

Completed 2013





## Jolly Place

Jolly Place is a mixed-use 32 storey high-rise ageing in place development comprising 243 units in a configuration of bed-sit and one bed apartments. A multi-level podium contains social, recreational, ancillary services, medical and therapy services in addition to common activities areas. These include a Care and Attention home, restaurant, library, rehabilitation health centre, games and activity spaces, meeting areas and a pool/hydrotherapy centre. The facility was designed to foster strong linkages to the community, with a focus on the integration of day services.

This innovative pilot project for the Hong Kong Government was part of the first major initiative to refocus government housing attention to the elderly. ThomsonAdsett has acted as the specialist aged care adviser providing design and management advice to the architects and operators. The project received first place in the Residential category of the Hong Kong Government's Quality Building Awards.

### Client

Hong Kong Housing Society

### Location

Tsuen Wan O, Hong Kong, SAR  
China

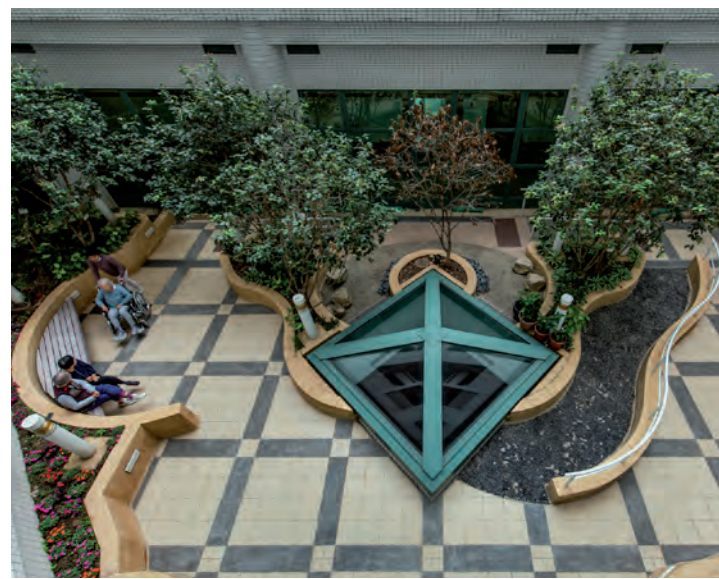
### Services

Architecture

### Timeframe

2003





## Cheerful Court

This pilot project for the Hong Kong Government comprises 333 units in a mixed-use ageing in place residential high-rise. The building's podium contains social and recreational facilities; ancillary, medical and therapy services as well as retail shopping. ThomsonAdsett acted as the specialist Aged Care advisor providing design and management advice to the architects and operators.

The units are in configurations of bed-sit and one bed apartments. Lift and stair cores have been separated into three clusters to optimise resident and staff participation and serviceability. Landscaped gardens are provided on the podium and on the 'sky terraces,' as secure and quiet recreational and therapy spaces. Careful planning and design allowed the inclusion of social, recreational and therapeutic services within the same building. Key areas include restaurants, library, polyclinic, respite centre, games and activity spaces, meeting spaces and a pool/hydrotherapy centre. The intention was that this facility provided strong linkages to the community for the integration of day services.

### Client

Hong Kong Housing Society

### Location

Jordan Valley, Hong Kong, SAR  
China

### Services

Aged Care advisor

### Timeframe

Completed 2004





## Sunshine Complex for the Elderly

The original Tung Wah Group of Hospitals (TWGHs) and Jockey Club Sunshine Complex for the Elderly was built in 1971. By the end of 2008, the government approved the redevelopment of TWGHs and Jockey Club as one of the fast track projects to boost the economy of Hong Kong.

The redevelopment involved the demolition of the existing buildings and reconstruction of a 9-storey new building to accommodate dormitories for subvented and self-financing places, function rooms, staff office as well as all ancillary facilities.

This improved design not only enhances the living environment of the facility, but ensures that the services provided in the new facility can meet with the needs of our elders in future. Furthermore, the design caters for the more diversified and individualised needs of different elders, such as those with dementia and/or exhibiting challenging behaviour.

### Client

TWGHs and Jockey Club

### Location

Jockey Club, Hong Kong, SAR  
China

### Services

Architecture

### Timeframe

2016





## Redmond Park

This project for the Royal Freemasons' Homes of Victoria represents a comprehensive refurbishment of the existing site, originally built in the 1960's and encompassing a nursing home reaching the end of its useful life.

Working with market analysts, financial planners, as well as marketing and brand consultants, the 'Redmond Park' brand was born. Against industry expectations the apartments sold "off the plan" with aspects of an intentional community located close to a university. This highly successful project is the subject of great industry interest

The ground floor was designed as a dedicated shared spaces area, promoting inclusion and social connectivity, with al fresco dining, a bar and study, a business centre, hairdressing salon, a studio and a gymnasium.

### Client

Royal Freemasons Ltd

### Location

Carlton North, Melbourne, Victoria, Australia

### Services

Architecture

### Timeframe

Completed 2009





## The Menzies

The Menzies is a \$35M five-star Lifestyle Retirement Living development set in the heart of Malvern, among exclusive shopping precincts and adjacent to the local civic precinct. It is a superior early example of the trend towards lifestyle choices in the retirement accommodation market.

The premier inner-city site created the opportunity to provide a multi-level solution, with 4 levels fronting Glenferrie Road, and 6 levels within the heart of the site. The building appearance is that of an opulent hotel, relating to its surrounding neighbours, and comfortably identifiable with its inhabitants.

124 upmarket apartments are complemented by common facilities, which include Club Menzies, a gymnasium and swimming pool, and a medical centre. All apartments are designed to provide enhanced living for clientele over the age of 55, while the subtle design allows its discerning residents to age-in-place.

### Client

Multiplex

### Location

Malvern, Melbourne, Victoria, Australia

### Services

Architecture

### Timeframe

Completed 1999



## Cypress Gardens

With a look and feel in keeping with the surrounding resorts and hotels on the Gold Coast, TriCare's new building at Cypress Gardens confirms their commitment to providing high quality care on this site.

The brief for this project was to provide the new accommodation wing, new main entry and resident amenities. Resident rooms are spacious and well-appointed, as are the resident lounge and dining rooms. The facility has been planned with a focus on delivering person-centred care. Staffing areas are centrally but discretely located, and technological solutions are embedded into the infrastructure of the building.

TriCare Cypress Gardens is an elegant facility that allows a high standard of residential care and amenity to be offered.

### Client

Tricare

### Location

Clear Island Waters, QLD, Australia

### Services

Architecture and Interior Design

### Timeframe

Completed 2017





## Aveo Durack Aged Care

Aveo Durack is a 123-bed residential aged care facility in a contemporary three-storey facility. Constructed on the edge of an existing retirement village, this facility is part of an expansion and renewal of this site which will allow Aveo to provide all levels of care to their clients.

Planned around two central courtyards, a range of room types are provided which offer residents choice in their level of finish of their room. Large living and communal areas are provided along the central spine of the building and in taking advantage of its prominent hilltop position, this facility provides resident amenities on the top floor which look towards the city. .

### Client

Aveo

### Location

Durack, QLD, Australia

### Services

Architecture

### Timeframe

2017





## Streeton Park

The site for this retirement village, located on Vine Street cul de sac, overlooks dense foliage alongside banks of the Yarra. A short walk from Melbourne's Museum of Modern Art at Heidi, the location is a long established hub for an elite arts community in Melbourne. A retirement village for these patrons of the arts has been keenly awaited.

This village accommodates 85 premium independent living apartments, complemented with a large variety of community areas. They include several lounges, a business centre, fine dining restaurant, café bar, sports bar, salon and a wellness centre. There is provision for 1 car parking space to each apartment. There are over 20 apartment layouts ranging from single bedroom apartments to 3 bedroom penthouses. Selling prices range from \$585,000 to \$1.25M. Market research described the target segment as innovators. Its concept, interiors and numerous small details underwent rigorous design reviews to ensure a product pitched perfectly at this target market.

### Client

Royal Freemasons Ltd

### Location

Melbourne, Victoria, Australia

### Services

Architecture

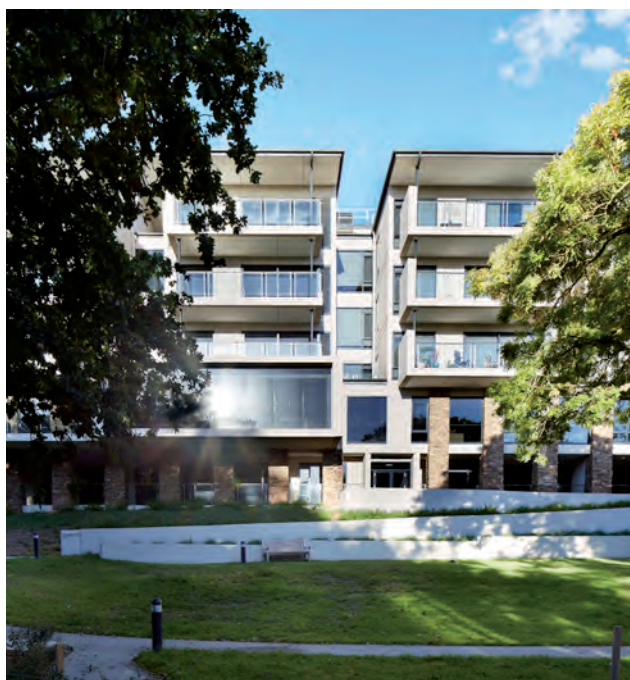
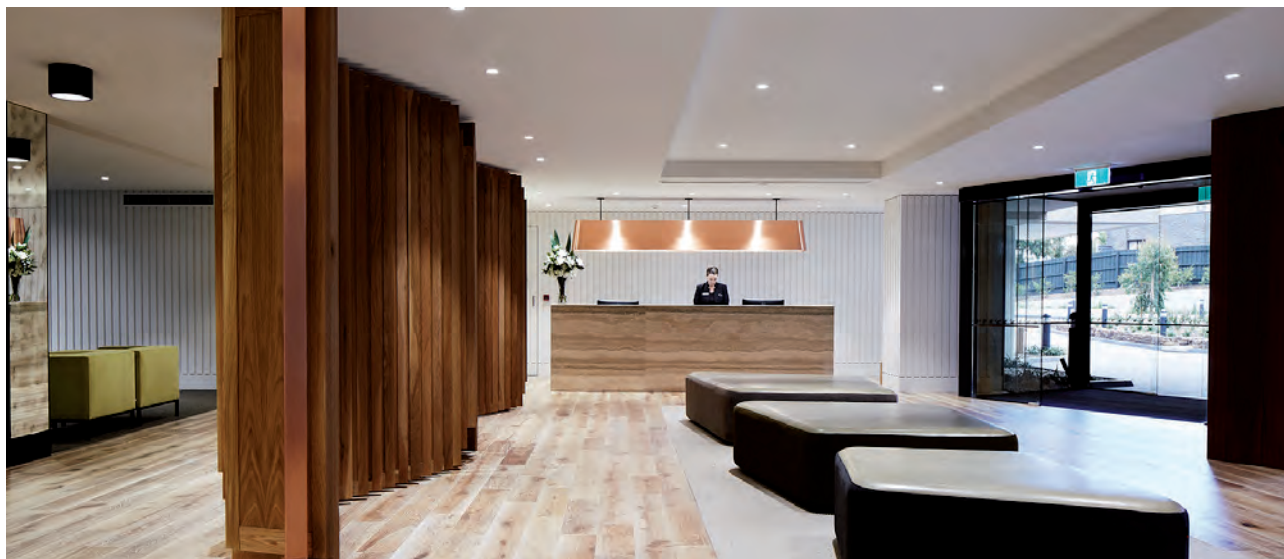
### Timeframe

Completed 2016

### Award

Winner of 2017 Best Silver Architecture Awards at the 5th Eldercare Innovation Awards, Ageing Asia









Exterior architecture by DBI  
Exterior photography by Angus Martin Photography

## Aveo Newstead

Aveo Newstead is Brisbane's first vertical seniors' village. The design maximises the benefits of a vertical seniors' village in this key urban location, capitalising on views to the city and surrounds. The tower is constructed over the existing Gasworks retail precinct, giving residents and their visitors access to high quality retail and commercial spaces. These include a supermarket, boutique markets, coffee shops, restaurants, hair and beauty, pharmacy and doctors.

The vertical village provides residents with multiple living options ranging from independent living apartments, assisted living and residential aged care. These options allow residents the choice to remain within the same building as their needs change. There are 144 independent living units, 55 assisted living units and 99 residential aged care bedrooms.

The residents have access to numerous wellness and lifestyle options within the building. These include a day spa, gym, hair and beauty, wellness studio, lounge, bar, function room, café, virtual reality golf, theatre, technology hub and outdoor recreation spaces. The residential aged care floors are arranged around a number of courtyards. The indoor/outdoor relationship across multiple levels of the building reinforces the connection to our subtropical environment.

### Client

Aveo

### Location

Brisbane, Queensland, Australia

### Services

Interior architecture (residential aged care facility, lifestyle and wellness facilities, and assisted living unit common areas).  
External architecture by DBI.

### Timeframe

Completed 2018

### Award

2019 Finalist, 7th Asia Pacific Eldercare Innovation Award – Project of the Year (Ageing in Place)





# Health

We have over 40 years of experience in delivering architectural services for health care projects, ranging from small regional primary health facilities to international tertiary hospitals.

The majority of our health care projects have involved significant redevelopment of existing brownfield sites, and we are highly experienced in considering staging implications and decanting strategies for redevelopment of operational facilities.

We deliver world-class health care facilities of all scales and types that nurture well-being through a deep engagement with all project stakeholders. We weave our intricate knowledge of health care regulations and best practice into each strategy to further the longevity of your project.

Our functional planning ensures the efficient operation of each facility, whether expanding, remodelling or building a new complex. We understand the impact of physical environments on people's well-being, and design facilities that offer support for every patient's needs.

ThomsonAdsett combines a wealth of Australian and international experience with knowledge of local markets and conditions to produce value-added solutions.

Our priorities as decision makers are driven by the interests of special needs groups, local communities and legislative frameworks.

We have earned an international reputation for working cooperatively with local consultants and medical practitioners including clinical specialists, engineers, doctors, registered nurses and medical executives. By working together, we can ensure our solutions respond appropriately to individual client resources, complement individual social contexts and provide a functional and future-focused outcome.

In addition to emerging market trends and the variable nature of disease patterns, the rate at which technology is advancing has made health facility planning extremely intricate.

While authority guidelines and standards assist designers with specific compliance issues, they do not provide adequate information to assist the process of creating a flexible and detailed health facility solution.

Our approach is defined by the flexibility and foresight built into each of our health care projects. More than just general facility planning, our functional planning process produces consistent yet adaptable outcomes. This multi-disciplinary approach can be applied whether the decision is made to expand a facility, remodel existing areas or build a new complex.

The process is driven by a team of specialists who believe that a successful architectural response can only come from an agreed concept plan, addressing all operational conditions, business drivers and regulatory requirements. Our ability to understand the functional needs of our clients and address the operational matters critical to their viability, gives us the confidence to deliver value-added health care solutions across private and public sectors, both in Australia and overseas.









## Taikang Tongji International Hospital

Taikang Tongji International Hospital is located at the Sixin, Hanyang District, close to the Liantong canal.

The design is generated by the conscious intent to blend the architecture with the natural landscape and to provide a landmark building which the local communities are proud of.

A series of landscaped podium terraces was generated as landscape form to integrate the building within the site and to bring social green spaces up the building.

The extensive use of landscape throughout the tower form is intended to generate multiple levels and gradients of open and natural public spaces within the building, and to create landscaped breakout spaces for the well-being of visitors, patients, carers and staffs.

### Client

Taikang Hospital

### Location

Sixin, Hanyang District, China

### Services

Architecture

### Timeframe

Design completed 2015









## Wuxi International Health City Masterplan

ThomsonAdsett was engaged to undertake the Master Planning and Detailed Schematic Design for the International Health City at Wuxi, 110km Northwest of Shanghai. The Master Plan for the 33 Ha site includes more than 2,200 residential apartments in a parkland setting. Each apartment is designed to be future or seniors-living ready so that residents may age in place with dignity. A 600 bed elderly care and mental health facility is located in the Southeast corner of the site, overlooking one of the natural canals that permeate the site. A new 1400 bed international hospital, conference and teaching facilities are located in the Northeast corner of the site. These facilities will be run by the client's operational partners, Cleveland Clinic, thus providing state-of-the-art specialist cardiac, oncology and rehabilitation services to Jiangsu Province.

### Client

Challengene

### Location

Wuxi, China

### Services

Architecture, Health planning

### Timeframe

Design completed 2011

Development of a regional centre of excellence in Cardiac, Oncology, Rehabilitation and Elderly Care for Jiangsu Province, China.





## Townsville Hospital

The alliance between ThomsonAdsett and HPI (TAHPI) were engaged along with Cox Rayner to undertake a Campus Wide Master Plan for the redevelopment of Townsville Hospital. The Master Plan evaluated options for the Townsville Hospital campus taking into consideration the services to be provided as described in the Clinical Services Plan, demographics, future trends and existing facilities. Future proofing formed a key principle of the Master Plan and included life cycle considerations, possible re-fit, expansion and redevelopment opportunities of current and proposed new infrastructure.

Upon completion of the Master Plan, TAHPI and Cox Rayner were commissioned to provide full architecture and health planning services for the first stage of the redevelopment comprising redevelopment of the emergency department, new 34 bed inpatient ward and expansion of the existing medical imaging department.

### Client

Queensland Government

### Location

Townsville, Queensland, Australia

### Services

Architecture. Health planning

### Timeframe

Stage 4 completed 2016

## Kwong Wah Hospital

This project involves a two-stage redevelopment of the 50+ year-old Kwong Wah Hospital combining traditional Chinese medicine with contemporary Western medicine.

The replacement of existing hospital staged over a 10 year period, with all existing facilities remaining fully operational during construction.

All existing facilities of the tertiary level hospital will be replaced.

New facilities include a Chinese medicine outpatient clinic; integrated Chinese and Western medicine in-patient wards; Clinical laboratory (including a Chinese medicine lab) and radiology facilities; an accident and emergency department with an emergency medicine ward; Ambulatory Care Services; In-patient wards, Operating theatres and Intensive Care units.

Stage 1 works are in construction with completion due in 2020.

### **Client**

Hong Kong Hospital Authority

### **Location**

Kowloon, Hong Kong, SAR China

### **Services**

Architecture, Health Planning

### **Timeframe**

Under construction

### **Construction Value**

\$14 Billion (HK) / \$2.5 Billion (AUD)

This redevelopment will make Kwong Wah Hospital one of the largest modern hospitals in Hong Kong, with more than 1,200 inpatient beds and over 400 day beds.









## St Paul's Hospital

ThomsonAdsett was engaged to undertake a Master Plan study, followed by full Architectural and Health Planning services, for the redevelopment of the St Paul's Hospital campus in partnership with P&T Architects.

The challenge was to maintain the existing hospital services while undertaking the redevelopment on a tight island site. This was compounded by other facilities collocated on site, including a cathedral, convent and primary school, which required non-interruption by the redevelopment. The final Master Plan strategy was to develop the new Hospital in two stages. Stage 1 involved the construction of a 26 storey, 80,000 sqm temporary hospital facility on the Northeast corner of the site. The design for this building followed the principles of "long life, loose fit", through which all hospital functions would be accommodated while the new 450 bed facility was constructed. Upon completion of Stage 2, all hospital services will be decanted and the temporary facility will be adapted for use as administrative and training facilities, as well as private consulting suites.

### Client

Hong Kong Architectural Services  
Department

### Location

Tin Shui Wai, Hong Kong, SAR  
China

### Services

Architecture

### Timeframe

Stage 1 completed 2009

Stage 2 completed 2017





## Tsuen Wan Adventist Hospital

Situated on a sloped elongated site, the extension to the hospital meets challenges in its design and construction. The existing Tsuen Wan Adventist Hospital comprises a 130-bed hospital block built in the 1960s, a nursing school and a 10-storey administrative block and staff quarters.

The nursing school and administrative block would be demolished and a new hospital block will be built to accommodate new wards, outpatient clinics, specialty and day surgery centres, operating theatres, various hospital services, an auditorium and new car parking facilities. The redevelopment project will be carried out in two stages to maintain continuous operation of the Hospital.

### Client

Seventh-Day Adventist Corporation (HK) Limited

### Location

Tsuen Wan, Hong Kong, SAR China

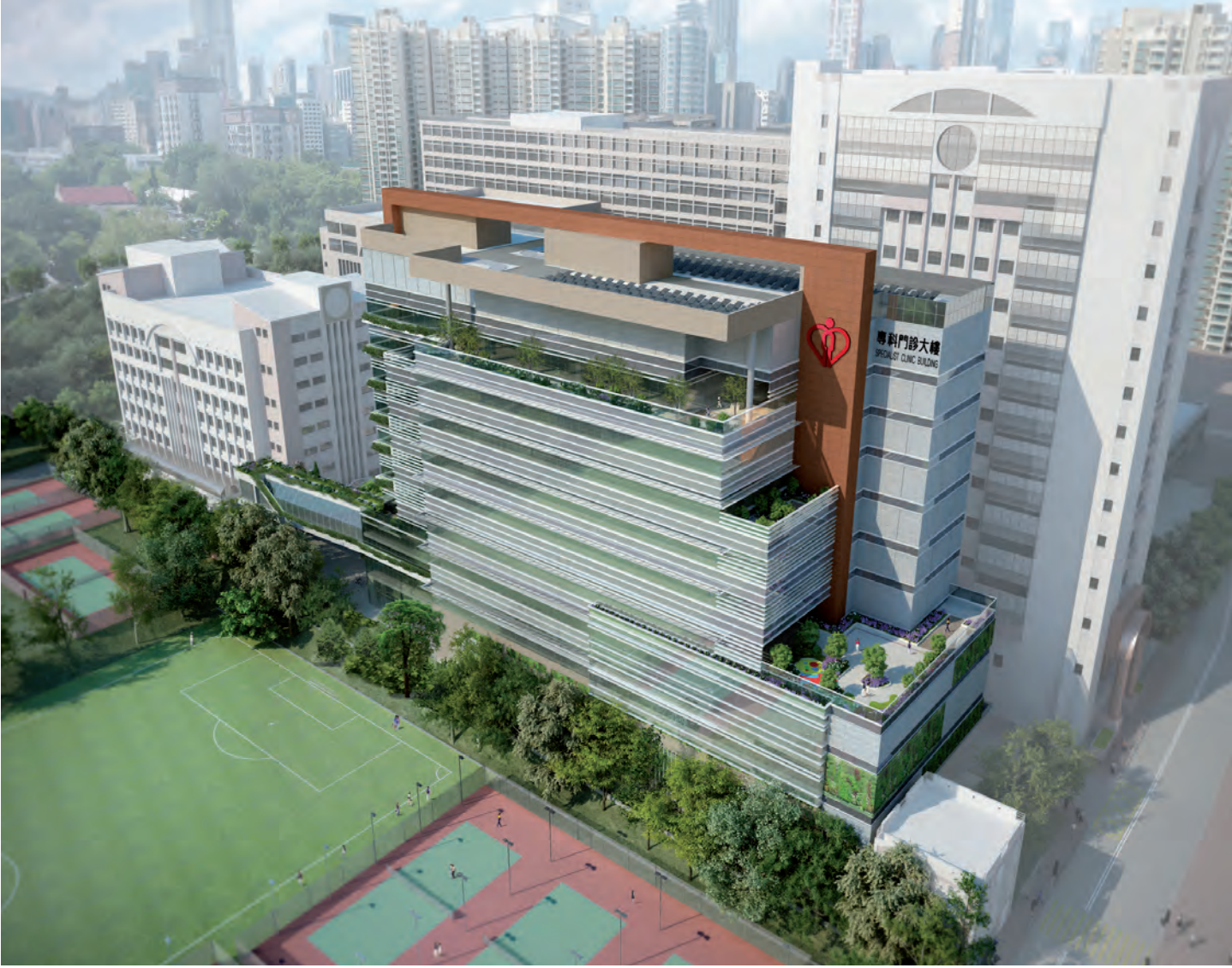
### Services

Architecture

### Timeframe

Completed 2014





## Yau Ma Tei Specialist Clinic

The Yau Ma Tei Specialist Clinic is destined to be a truly healthcare and sustainability-orientated design that is not only externally appealing, but also an exemplar in internal design, facilitating positive physiological health for patients.

The new massing on the Queen Elizabeth Hospital campus will comprise an 11-storey building incorporating a re-provision of YMTSC services, new linear accelerator facilities, expansion of the five existing ambulatory services, ancillary facilities, new landscaping areas, and new link bridges. The concept strongly considers the association between health outcomes and natural light, noise, and contact with nature, using design to promote family involvement and patient control, safety and accessibility. A sequence of extensive landscape terraces will provide sun-shading and greenery, fulfilling an essential therapeutic role.

### Client

Queen Elizabeth Hospital

### Location

Kowloon, Hong Kong, SAR China

### Services

Architecture

### Timeframe

Concept Design completed





## Sunway Medical Centre

Established in 1995, Sunway Medical Centre rapidly established itself as a leading private hospital in the Kuala Lumpur and engaged ThomsonAdsett to conduct a health services study & masterplanning exercise which lead to a major expansion of the hospital which was completed in 2009.

The expansion required the existing hospital to remain operational during the expansion process which required complex staging considerations at both the design and construction phases. It created over 40 new specialist clinics including new centres of excellence for ENT, Microsurgery and IVF. A new ICU/HDU acute care wing was created, together with an expanded operating theatre suite, new day procedure unit, and support facilities. An additional ward wing was added to increase the total bed numbers from 180 to 240 beds. A unique feature for a hospital is the 5-star hotel quality convention centre capable of accommodating 600 conference delegates. A 500-space multi storey carpark completed the expansion project.

### Client

Sunway Medical

### Location

Petaling Jaya, Sengalor, Malaysia

### Services

Architecture

### Timeframe

Completed 2009





## Penang Adventist Hospital

ThomsonAdsett was engaged to prepare the strategic development plan for the Penang Adventist Hospital. ThomsonAdsett has since undertaken a number of significant projects for Penang Adventist Hospital including a new dialysis centre, new specialist clinics wing, gastroenterology centre and the new Adventist College of Nursing.

The alliance between ThomsonAdsett and HPI (TAHPI) recently completed the 2038 Strategic Master Plan for the Penang Adventist Hospital and are currently executing first stage works, which comprise an integrated oncology centre. Subsequent stages of the project include a new podium incorporating hotel-style lobbies as well as patient and staff support facilities, an expanded peri-operative suite, expanded medical imaging facilities, new day surgery unit, further expansions to the oncology department, and a new inpatient ward tower featuring 300 new single-bed rooms.

The design for the Penang Adventist Hospital integrates environmentally sustainable design principles, and as such will create a new benchmark for healthcare facilities throughout Malaysia.

### Client

Penang Adventist Hospital

### Location

Penang, Malaysia

### Services

Architecture

### Timeframe

Design completed 2016





## Yishun Community Hospital

An acute health facility with 428 beds, and capacity for future expansion through adaptable design features and construction processes. A key objective is to promote innovation in health delivery, education, and training through a facility that embraces national and international best practice.

The hospital has been planned in modules that are linked via a central green atrium. The central street is a signature of social, interactive and collaborative space. The new hospital will also provide crucial linkages to other activities and features of the Khoo Teck Puat Hospital.

This development will be both complimentary to the existing hospital, yet retain its own distinct identity. High quality open space is provided in strategic locations and to accommodate recreation, respite and relaxation for patients, staff and visitors to escape the clinical environment. Affectionately known as the Rainforest Trail, there is abundant greenery around the site, this is guided by the principles of green healing.

### Client

MOHH / SingHealth

### Location

Singapore

### Services

Architecture. Health planning

### Timeframe

Concept Design completed





LOBBY A

G. E. R. I.  
GIATERIC EDUCATION &  
RESEARCH INSTITUTE







## Education + Communities

Creating meaningful learning environments results in enhanced educational experiences. With our clients, ThomsonAdsett has delivered over 500 educational and community projects.

These projects demonstrate our deep understanding of the impact education has on young lives.

- We have won 17 education design awards in the last eight years.
- We have a proven track record delivering sustainable outcomes. Charles Sturt University Engineering Building received the 2017 National Sustainable Building Award for Educational Projects.
- Our experienced team of architects, educational consultants, interior designers and technicians are experts in new builds and adaptable re-use projects.
- We are designers of connected architectural solutions applying techniques and efficiencies from different sectors to achieve the best outcome for our clients.
- We have extensive experience in delivering projects through nontraditional procurement methods such as Design and Construct and Early Contractor Involvement.
- We plan our projects to be successful by ensuring sufficient resourcing, coordination and review.
- We possess the expertise to deliver a complete service including working with teachers to develop educational models.
- We offer a human-centred approach to user group consultation with developed techniques that enable efficient stakeholder engagement.
- ThomsonAdsett's implementation of building information modelling (BIM) uses the best technology and process for the benefit of the project.

Our 'one-studio' approach brings together a broad range of expertise and experience from within Australia and Southeast Asia. We translate the research, theory and findings from this experience to your projects.

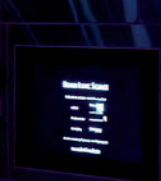
We believe education makes a difference in people's lives and we embrace the responsibility to design spaces that support and enrich this experience.





DEAKIN  
UNIVERSITY AUSTRALIA  
Worldly

DEAKIN  
UNIVERSITY AUSTRALIA  
Worldly







## Boyne Tannum Memorial Parklands

The Boyne Tannum Memorial Parklands project near Gladstone began with an exploration of the character of the existing site and the process of memorial services. The parklands define these relationships into experiences that form the background to memorial services.

Two landscape walls and a shelter chapel, designed with appeal to the wider community regardless of religious beliefs, define the main facility. This building is twisted off axis to orientate vistas to the river inlet and surrounding bushland. Folding forms bend down to subtly define this space. The 80-100 seat chapel creates an experience that is in itself reflective and calming.

Two landscape walls with openings allow visitors to experience the bush scenery beyond.

### Client

Calliope Shire Council

### Location

Boyne Island, Queensland, Australia

### Services

Architecture

### Timeframe

Completed 2007

### Award

2008 AIA Central Queensland Building of the Year





## Sir Earle Page Library & Education Centre

The project sees the transformation of an under-utilised railway carpark into a stimulating and invaluable civic asset. The building comprises a library, the regional library administrative centre and an outreach facility for Southern Cross University, and takes the opportunity to be a showpiece for Council's ESD initiatives. The final Grafton CBD location was selected after we prepared conceptual proposals for two different sites. The design responds to the site's particular flooding constraints, resulting in an elevated form that connects down to the ground plane with a curved feature stair. Full height glass walls open the library out to the public car park and the street, while a solid wall protects the internal spaces from the harsh western sun. Controlled openings to the north east provide outlook and daylight for the library workers while protecting them from the elevated rail line. The tenets of flexibility and adaptable use dictate the design of the library's internal spaces. A large open floor plate maximises passive surveillance and interaction and creates a sense of openness and engagement.

### Client

Clarence Valley Council

### Location

Grafton, New South Wales, Australia

### Services

Architecture

### Timeframe

Completed 2014

### Award

2014 AIA Country Division - New Public & Commercial Architecture Commendation





## Queensland State Netball Centre

The Queensland State Netball Centre is a new eight-court indoor netball centre on the campus of the existing Queensland Sports and Athletics Centre (QSouth Australia C) at Nathan. This centre will provide a training and playing venue for the Queensland Firebirds netball team and an administrative base for Netball Queensland, the sport's governing body in the state. It will also function as a community netball facility, and consequently may host tournaments from a local to an international standard.

The facility is being developed under the direction of Stadiums Queensland, who will ultimately own the facility.

Netball is the largest female participation sport in the country. It is important that this facility provides a high profile destination for players, administrators, coaches and spectators alike. Its ambience and function should be both aspirational and inspirational to girls and young women everywhere. Netball Queensland's vision is to create a true 'home' of netball.

### Client

Hansen Yuncken

### Location

Brisbane, Queensland, Australia

### Services

Architecture

### Timeframe

Under construction





## Somerville House Seymour Library

ThomsonAdsett was commissioned to develop the refurbishment plan for the library and an associated Funding Application. The design has completely transformed the existing library and support staff areas.

The project includes two new mezzanines and a complete remodeling of the main lower library level. Our design provides a diversity of formal, informal, technological, collaborative and study spaces. Detailed planning has realised floor space for the client beyond the original expectations.

The design also includes a new lift, a remodeled welcome and reception space, multi-functional spaces, and silent study areas.

The library is a fundamental aspect of the social structure of the school with spaces designed, staged and zoned to support peer-to-peer learning and extended-use programs.

This project is an exemplar of maximising the residual value of an existing asset with a design that is sensitive to the character of the existing building. The design offers choice and has the inherent flexibility required to support a diversity of learning modalities.

### Client

Somerville House

### Location

Brisbane, Queensland, Australia

### Services

Architecture, Interior Design

### Timeframe

Completed 2018





## Australian Catholic University Brisbane Campus (McAuley at Banyo) Mercy Building

The Mercy Building for Australian Catholic University (ACU) presented a unique opportunity to create a community landmark showcasing the attributes of the Brisbane campus to the ACU community.

The design creates a series of innovative learning environments for students and staff that embrace ACU's culture and ethos. ThomsonAdsett drew inspiration from advancements in teaching and learning, workplace needs and the unique qualities of the immediate and wider site. Values such as unity, a strong Catholic ethos and character, wholeness and humanity have formed a vision of 'Innovation in Learning' for this project.

The building engages with its surrounding context by sensitively connecting to existing buildings, and also by the heritage characteristics and the panoramas of the broader site.

The design was informed by a collaborative human-centred consultation process, inclusive of stakeholder workshops and various user group meetings with staff, students and executives.

### **Client**

Australian Catholic University

### **Location**

Brisbane, Queensland, Australia

### **Services**

Architecture, interior design

### **Timeframe**

Completed 2018

### **Construction value**

\$31.2 million





“We are tremendously excited and proud to see the imaginative use of space that transforms the university campus. It will enrich our students, staff and partners for many years to come. The building and its impact on the university community is outstanding, leading edge and truly world class.”

Jim Nyland, Associate Vice-Chancellor (Brisbane), Australian Catholic University

## Retail + Commercial

We understand the challenges of the shifting retail environment, and create flexible spaces for changing business and customer needs. We create masterplans and deliver retail architecture that maximises economic return for our clients.

We have a reputation for producing interiors and architecture that meet project objectives, time and budgetary constraints, and we strive for memorable design responses to engage with customers. Through the creative use of a range of dining typologies, social functions and community tenants, the modern retail destination is an integrated precinct.

While principles of retail and tenancy precinct planning remain pivotal to commercial success, the definition of a centre's mood and aesthetic language is fundamental to its unique offering. Interior upgrades and asset refurbishments are high-return interventions that help to define an experience-focused destination. In larger projects, contemporary spaces with sophisticated materiality and engagement with social or community typologies all help to reposition a retail centre from an asset to an experience.

Years in business

47

Completed projects

470

Retail

310

Industrial

50

Hospitality

20



Ripley Town Centre, Queensland





YAW AMAYOTA?

NEWS  
OYEMA WA

MISSISSIPPI CENTRE

DISCOUNT  
CHEMISTS





## Ripley Town Centre Stage 1

This integrated commercial and community hub comprises a full-line supermarket, shops, medical centre, offices and 360 on-grade car parks.

The 9,400sqm development is the catalyst to accelerate growth of Ripley – a suburb experts predict will continue to be the fastest growing in Queensland for the next decade.

This project received a 5 Star Green Star rating due to its sustainable design and construction. ThomsonAdsett's client, Sekisui House, saw sustainability excellence as the primary objective of the Ripley Town Centre.

ThomsonAdsett is continuing this collaboration with Sekisui House on Stage 2 of the design, which comprises seniors living and health precincts connected with the growth of the Ripley Town Centre.

### Client

Sekisui House

### Location

Ipswich, Queensland, Australia

### Services

Architecture

### Timeframe

Completed 2018





Credit: Jared Vethaak Photography

## Racecourse Village

This neighbourhood shopping centre developed by the Brisbane Racing Club is an iconic gateway to their historic Eagle Farm Racecourse.

Located in Ascot, one of Brisbane's exclusive suburbs, this village hub is a contemporary architectural statement that melds with the classic charm of the adjoining racecourse which has been an integral part of the community for over 150 years.

Racecourse Village sets the new benchmark for neighbourhood supermarket-based centres with the latest Woolworths fit-out design and an al fresco dining precinct, combined with specialty, service and lifestyle tenancies designed to maximise customer convenience and amenity.

The 6,000 square metre centre is over two levels with on grade car parking for 300 cars.

Racecourse Village offers a premium retail experience to sustain the local community and the Brisbane Racing Club into the future.

### Client

Brisbane Racing Club Limited

### Location

Ascot, Queensland, Australia

### Services

Architecture and Interiors

### Timeframe

Completed 2018



## YuCheng historic Commercial Street in HongHu

YuCheng historic Commercial Street is located at HongHu, HuBei Province, China and takes “JingChu Water Town, Waterfront Village” as the theme to create a diverse, fun and commercially viable recreation and leisure space.

The design aspiration of the project is to showcase the unique culture of street life and to design a new cultural anchor by the bank of NeiJing River in Honghu.

### Client

Hubei YuCheng Tourism Development Co., Ltd.

### Location

HongHu, HuBei Province, China

### Services

Masterplanning and Public Space Design

### Timeframe

Completed 2017





## Xi'An SanHe WeiYang Legend Shopping City

Xi'An SanHe WeiYang Legend Shopping City is located at Xi'An, ShanXi Province, China. It is a 310,000 sqm integrated development which bring together a mixed of retail, commerical and residential. The scheme is based on the concept of "Time and Space" and draws upon the regional architecture by combing architectural iconography and ecological.

One of the distinctive regional characteristic of the Big Wild Goose Pagoda was designed as the architectural form, which symbolises grown and economic prosperity for the city. The project also aim to create a green & sustainable environment which will afford a generous offerings of pleasant and open space for the city to enjoy.

### Client

Wuhan Sanhe Guangyu Real Estate Development Group Co., Ltd.

### Location

Xi'An, ShanXi Province, China

### Services

Masterplanning and Architecture

### Timeframe

Completed 2017



## Commercial

Through collaborative stakeholder engagement, we create commercial workplace settings that can inspire staff and promote staff retention, engagement, health and wellbeing.

Efficiency and flexibility are the hallmarks of any successful workplace. From concept development and overall space planning, to the selection of finishes, fittings, colours and furnishings; we ensure our designs are always expertly balanced in both function and aesthetic.

We balance programming and budgetary needs with those of function and aesthetics. By listening to our clients and guiding them through the design process, we are able to produce designs that are a 'best fit' to their requirements. We design interiors that work for the people who use them.

Smart sustainable design is simply efficient design, and we have experience with practical design measures that save on operational expenses. We are abreast of national and international industry trends which ensures our designs are always market leading.

ThomsonAdsett experience in workplace design includes numerous tertiary office refurbishments, such as for Griffith University, Deakin University, Charles Sturt University and the University of Queensland.

We received the AIA Beatrice Hutton Award for the 5 star Greenstar-rated Port Central 1 office building and an AIA Regional Commendation for the new 5 star Port Office Building at the Port of Brisbane.









## Environmental Protection Agency

The state's peak environmental body the EPA proved a good fit as tenant to the developer, Port of Brisbane Corporation, also an organisation with a strong environmental emphasis in all that they do. The purpose designed building is a perfect foil and billboard for the activities of the EPA. Their new home comprises public education, training and workshop facilities on the ground floor, and admin office and operational base for the EPA's South Moreton Bay field staff on the upper level.

The stunning harbourfront location provided opportunity to design a building that truly integrates with its setting. Strategically placed roof lighting strips provide natural light for 80% of working hours. Large full length windows and a generous upper deck take advantage of water views in two directions. The deck also offers a setting for informal work activities as well as for staff social activities.

### Client

Port of Brisbane Corporation

### Location

Manly, Brisbane, Queensland, Australia

### Services

Architecture

### Timeframe

Completed 2009





## The Port Office

Simple, open office floor plates enjoy vistas across the Port and its surrounds. Verandahs protect the interior from the harsh sun and provide breakout spaces with external sky gardens and balconies. Personal comfort is paramount, with staff provided personal comfort control, access to views and daylight, and 100% fresh air, creating an enviable work environment.

The design team took on the challenge of responding to the development's local and regional contexts while appreciating the unique cultural, organisational and social requirements of the Port of Brisbane. The result is a flexible, positive and inspirational space, which is also holistically conscious of health and wellbeing, and its environmental impact. Through many integrated systems the facility has achieved a 5 Star Green Star Green Building Council of Australia Design rating.

### Client

Port of Brisbane Corporation

### Location

Fisherman Islands, Queensland, Australia

### Services

Architecture

### Timeframe

Completed 2010

### Awards

Regional Commendation, Australian Institute of Architects Brisbane (2011)

Green Building Council of Australia, awarded 5 Star Green Star 'Design' 'As Built' ratings



## Shanghai Skyscraper in Wuhan

The project is located at the “SiXin” of Hanyang District of Wuhan, China. The 21,590 sqm development consist of a retail mall and two visually distinctive commercial towers.

The design of the two towers are designed to provide an ever changing appreciation of the relationship of the two towers at multiple view points. The most distinctive element of the two towers is the tallest glass monolith form which kicks out at the base to form a grand atrium entry of the tallest commercial tower.

### Client

Shanghai chamber of Commerce in Hubei

### Location

HanYang District, Wuhan, China

### Services

Masterplanning and Architecture

### Timeframe

Design Completed 2017





## SanJianFang Cultural Complex in Beijing

SanJianFang Cultural Complex is a 648,320 sqm development located in Chaoyang District, Beijing, China.

The overall planning strategy is inspired by the concept of the "New Silk Road". A continuous form run through the entire base on two axes: including an axis that combines the functions of cultural & tourism and another which raise to a giant screen which elevates up to 500 meters above ground.

The exhibition space within the development is designed to showcase the various cultures of the Silk Road and to host various scale of exhibition and conventions. The tallest element of the masterplan is a 120m landmark hotel tower at the crossroad of the two axes.

### Client

Diaoyutai MGM Hotel Group

### Location

Beijing, China

### Services

Masterplanning and Architecture

### Timeframe

Design Completed 2017





## CUA Carindale Branch

This bank branch fit-out at Carindale is the pilot of a larger national rollout for our client CUA. CUA wanted an innovative space that did not feel like every other bank branch, a space that their customers would look forward to visiting, and a space that would build stronger relationships with its customers and the community. The resulting branch moves away from the traditional transactional banking model and creates a space where employees, clients and community alike are connected and positive interactions occur.

The design takes cues from a cafe rather than a bank; the interior features elements such as bi-fold windows, ottomans, a potted herb garden, bench seating, and a Polaroid wall depicting customers' journeys through life that CUA has assisted with.

The client brief contained critical customer feedback claiming that branches and credit unions were boring and tedious. Considering this fundamental factor throughout the design process, we conceived a space that was warm, organic, and friendly. Adding to this welcoming atmosphere is the lack of any visible security measures - whilst still remaining actively secure - the cleverly disguised transaction facilities, and the abolishment of rigid customer queues.

### Client

Credit Union Australia (CUA)

### Location

Carindale, Queensland, Australia

### Services

Architecture, Interior Design

### Timeframe

Completed 2012

### Award

2013 Australia Interior Design Retail shortlist





# Resorts + Leisure

We design beautiful developments throughout the Asia Pacific region and Australia that offer luxury, convenience and comfort for guests.

From stylish interior design and architecture, to masterplanning and feasibility studies, our strategies help you achieve your business objectives at every stage of the project.

We embed the latest technology and systems in all our projects to ensure your resort or hospitality business runs as smoothly and efficiently as possible. Our multi-disciplinary team delivers outstanding lifestyle experiences through their combined expertise in residential, commercial and hospitality design.

We design environments which enrich the lifestyles of those who use and work at resorts and hospitality places. We understand that the success of a business not only relies on the services provided, but how the staff and customers feel in the space. This most important component of human emotion can influence a customer's decision making and instil confidence your business. Our luxury resorts and hospitality projects are designed with this in mind. We consider each aspect of your project, down to operational planning and workplace efficiency.

We liaise closely with architects, engineers, hotel operators and services departments to ensure the best possible outcome for both the guests and hotel operators. We apply our knowledge to ensure friendly, yet cost effective, environments that look after its users and staff. By incorporating the latest in environmental, material and technological advances, we aim to ensure the sustainability of the hotel and business. As part of our service, we apply a holistic approach to the design – we deliver positive outcomes for the initial design, all the way through to the daily operations of the project.



## **Selected Resorts & Leisure experience**

Holiday & Entertainment Precinct, Fiji  
 Ivory Hotel, Tweed Heads, New South Wales  
 Taumeasina Island Resort, Samoa  
 Loloata Island Resort, Papua New Guinea  
 Setya Villas, Lombok Island  
 Singapore Mixed Use  
 Residential and Retail Precinct Concept, Brunei  
 Bayside Apartments, Papua New Guinea  
 Bootless Bay Estate, Papua New Guinea  
 Kiunga Hotel development, Papua New Guinea  
 Huon Gulf Hotel Development, Papua New Guinea  
 Private Lounge Port Moresby, Papua New Guinea  
 Royal Papua Yacht Club, Papua New Guinea  
 ANG Haus, Papua New Guinea  
 Airvos Apartments, Papua New Guinea  
 Waigani Central Development, Papua New Guinea  
 South Pacific Games Village Concept, Papua New Guinea  
 Kokopo Market Redevelopment, Papua New Guinea  
 Radisson Blu Concept, India  
 Grand Mercure Suites Mackay, Queensland  
 Flagstaff Pavilions Port Douglas, Queensland  
 Castaway Cove, Queensland  
 Campbell Street Hotel, Queensland  
 "K." Kangaroo Point, Queensland  
 Mercato on Byron, New South Wales  
 Three Lanes West End concept, Queensland  
 Brisbane City Fringe Mixed Use Development concept, Queensland  
 East Darling Harbour Master Plan, Queensland  
 Gladstone CBD Revitalisation Strategy, Queensland  
 Gladstone Entertainment Centre, Queensland  
 Phoenix South Brisbane Mixed Use Precinct, Queensland  
 Hard Rock Café, Sydney, New South Wales  
 Hamilton Portside Kiosk, Queensland





## Loloata Island Resort

Loloata Island is a small, elongated island with a steep ridge line that extends the length of the island. Embracing the spirit of Loloata, the resort has been planned to engage with the environment and have a minimal impact upon the site.

Site coverage has been minimised to reduce the civil exposure of raising the inhabited areas of the island and contain the capital cost of services infrastructure and reticulation in a 'sprawling' development. Undeveloped areas will be rejuvenated and used as recreational areas or nature reserves. The compact nature of the development also increases connectivity between hotel suites and central facilities. The self-sufficient, private villas are located further away from the central amenities to provide greater seclusion. The resort is designed as a 'gallery on an island', a place of impressive scale with exhibition space, creating memorable and unexpected experiences for guests along with a beautiful attention to detail.

### Client

Lamana Developments

### Location

Papua New Guinea

### Services

Architecture

### Timeframe

Under construction





## Taumeasina Island Resort

The design of the new Taumeasina Island Resort aims to minimise impact on the existing island's topography, creating a harmonious link with the island's natural beauty.

Recently completed, the development features a mix of hotel suites and private villa accommodation, as well as conference, retail and restaurant precincts, a water sports pavilion, wedding venue and bar. Part of the island's redevelopment will also see the rejuvenation of open green spaces.

The major challenge of the project is to minimise the development's footprint. Designs for inhabited areas of the island have been raised to cater for this. However, building heights are limited to two storeys to reduce their dominance on the landscape.

### Client

Lamana Developments

### Location

Taumeasina Island, Samoa

### Services

Architecture

### Timeframe

Completed 2016





## Riley Hotel

A 5-star renovation, upgrade and extension to an existing hotel complex in Cairns. The Riley Hotel will become the first in a suite of 'Crystalbrook Hotels.' The design draws on the operator's focus on modern luxury, environmental consciousness and responsiveness to the local context.

Overall works include renovations to over 250 existing rooms, and the addition of a new 13-storey / 55 room tower complete with panoramic rooftop bar. The Riley Hotel will be repositioned to cement its role in the tourism capital of Far North Queensland.

### Client

Crystalbrook Collection

### Location

Cairns, Queensland, Australia

### Services

Architecture

### Timeframe

Under construction  
(Completion 2018)



## Bailey Hotel

A five-star hotel comprising 217 rooms, it explores the rich artistic culture of Cairns and its context. Facilities include five restaurants and bars, including a signature steakhouse and grill. Abbott Street offers guests an artistic and considered experience, representing another cornerstone in the Crystalbrook Collection of hotels and resorts.

With a highly activated streetscape and architectural cues drawn from its rich tropical context, Abbott Street will blend personality, luxury and artistry into a memorable experience for guests.

### Client

Prime Constructions for Crystalbrook Collection

### Location

Cairns, Queensland, Australia

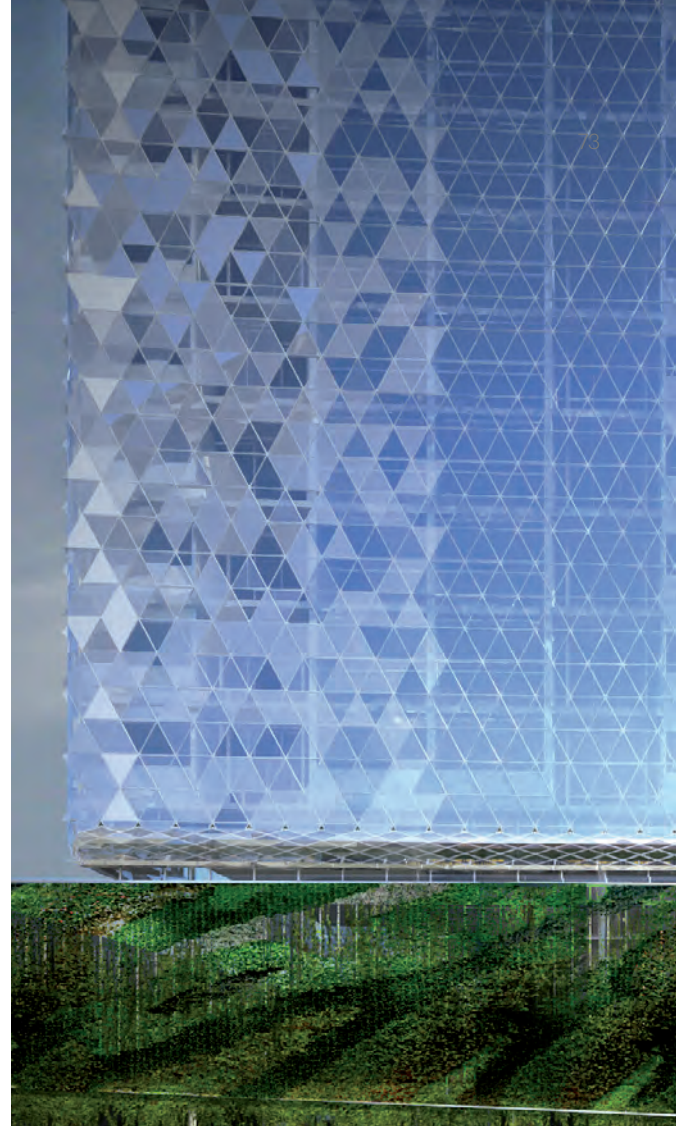
### Services

Architecture

### Timeframe

Under construction





## Campbell St Medical Precinct

The design of the Campbell Street Hotel aims to achieve an exceptional standard for the public realm, environmental sustainability and design quality.

At the ground floor level, the building is set back and raised by four storeys to create a generous public realm called the Urban Jungle.

The sustainability consultant, Ashburner Francis, has identified innovative funding strategies to enable the best engineering systems to be specified, which will result in the building achieving up to a 70% reduction in CO<sub>2</sub> emissions.

The building is designed to be constructed using large-scale factory-made modules, which will create a precision engineered building. This will deliver thermal insulation levels up to twice as effective as current BCA mandates.

### Client

Auscom Projects Pty Ltd

### Location

Brisbane, Queensland, Australia

### Services

Architecture

### Timeframe

Approved development



# Masterplanning

ThomsonAdsett is a reputable masterplanners who provide unique concepts on the fringe between architecture, landscape and urbanism.

ThomsonAdsett specialises in the development of long-term design strategies for complex projects. We create visionary ideas for our clients by:

- Engaging with and understanding stakeholders,
- Realising the residual value and potential of existing assets through analysis (buildings and landscapes),
- Embracing the history and culture of the site and organisation, and
- Embedding the strategic direction of our clients into the masterplan.

We conceive long-term visions while defining the short and medium-term interventions required.

Our experience and technique delivering user group consultations results in a deep understanding of the lived experience of stakeholders and their dreams. Our process delivers quantifiable outcomes from these consultations, enabling our designers to create visions that address these views.





## Urban Design of Jiayu New town

The Urban Design of Jiayu New town is a 94.48 Ha project designed around six designated themes of “water, green, hospital, island, culture and wisdom”.

It is a gateway township located at the DianJun District, Xianning, HuBei Province, China.

The new city of Jiayu New town is designed with the notion of the productivity landscape; as the new modern agricultural base of the new city.

The new city will showcase Jiayu culture through it’s civic infrastructure, act as a creative paradise for artistic creation and offer a recreational harbor where residents can enjoy life within a healthy and nature environment.

### Client

China Fortune Land Development CO.,LTD

### Location

DianJun District, Xianning, HuBei Province, China

### Services

Masterplanning

### Timeframe

Design Completed 2017





## QiXin Transport Orientated Development in JiangXia

QiXin Transport Orientated Development in JiangXia District, Wuhan, China is a 28.8 Ha integrated development which consist of residential, retail, commerical and a MRT arriving at the middle of the development site.

The core concept of this project is to incorporate a "Big J" green belt which will connect all surrounding key buildings as one united development. The planning strategy places the inner circle of the development as the business circle, and the outer circle of residential use.

### Client

WuHan Realestate Group Co,Ltd

### Location

JiangXia District, Wuhan, China

### Services

Masterplanning and Architecture

### Timeframe

Design Completed 2016





## Sanjiao Mountain Resort and Tourism Town in Xishui

The Sanjiao Mountain Resort and Tourism Town is a 10.5 Ha development located at the Sanjiao Mountain in Xishui, Huanggang, China.

The planning harness the natural beauty of the site by nesting the building within the valley and siting core retail and F&B offerings by the tranquil bank of a natural lake.

The geometrical multi faceted building forms are inspired by nearby rock forms; in which the form and materiality provide a contemporary architectural interpretation of the context.

As a point of difference and formality the main tourist information and administrative building is designed with a sweeping roof to symbolise a leaf resting upon the building.

### Client

Xishui Sanjiaoshan Tourism Resort Management Council

### Location

SanJiao Mountain, Huanggang, China

### Services

Masterplanning and Architecture

### Timeframe

Design Completed 2017





## Urban Design for Ci Lake West Bank in HuangShi

The urban design for Ci Lake West Bank in HuangShi adopts the conceptual planning strategy of “featuring the surrounding mountains as natural asset and creating axis for wayfinding and locality”.

These planning principles guide the physical planning of the 96.7 Ha urban design project by forming strong landscape axis which reference to the Baima Mountain and the Moon Mountain and locating the central core business area along the Ci lake, west of HuangShi.

### Client

Planning Department of HuangShi

### Location

XiaLu District, HuangShi, HuBei Province, China

### Services

Masterplanning and Public Space Design

### Timeframe

Design Completed 2017





## Ai Fei Ke Tourism Community

Ai Fei Ke Tourism Community is located within a 59.17 Ha site at the city of Jingmen, Hubei Province, China.

The project located at the bank of Zhanghe River will house commercial and retail, hospitality and waterfront leisure and recreational offerings.

The first stage of the development for “JiKe park” was designed to incorporate active sports and wellness resorts as one connected solution; “Aifeike Sports and Leisure Resort Development”. The conceptual planning of the first stage is organised around a circle; in which the circle, as a bridge acts as a unifying mechanism to organise all elements within a complete loop symbolising completeness and content.

### Client

Hubei ECOTIC Real Estate Co., Ltd.

### Location

JingMen, HuBei Province, China

### Services

Masterplanning and Architecture

### Timeframe

Design Completed 2017





## Landscape Design of LiaoJiaGou Central Park in YangZhou

The 20 Ha landscape design of LiaoJiaGou Central Park in YangZhou is envisioned as the new central park for Yangzhou.

The hydrology of the project is designed to capture and retain water from the ancient canals and to redistribute the water through a series of smaller rivers, basins and ponds for irrigation and cleansing purpose.

The incorporating of indigenous plants and flora is to help to rebuild the natural habitats for local species of birds and animals to flourish and to act as natural filters to improve water quality.

### Client

YangZhou Planning Bureau

### Location

YangZhou, JiangShu Province, China

### Services

Public Space Design and Landscape

### Timeframe

Design Completed 2014





## One River Two Banks in HongHu

The 12 Ha project is located at the banks of NeiJing River in Honghu. The design intent is to reinforce the historical and culture heritage of Neijiang River. The design concept develop the design intent into many opportunities of unique social spaces and into a pearl of “urban scenery belt”.

The project draws upon the unique surrounding natural resources to create a series of urban and cultural platforms which act as gateways into key developments along the banks.

### Client

HongHu Government

### Location

HongHu, HuBei Province, China

### Services

Public Space Design and Landscape

### Timeframe

Design Completed 2017

# People

ThomsonAdsett are passionate behavioural designers, thinkers, educators, leaders, designers and collaborators. We believe that the true value of consultation exists without preconceived ideas. We are specialists who appreciate that designing with people, their experiences, aspirations and appetite for re-imagining what is possible, is where success resides. In education this is critical and ThomsonAdsett have a team of people with diverse experience and skills that all feel very passionately about the positive impact education projects can have on peoples' lives.



**David Lane**  
Chairman Emeritus, Partner,  
2018 Global Ageing  
Influencer Ageing Asia

David is one of Australia's best known architectural specialist in the Seniors Living industry, having directed over 500 projects in Australia and internationally over the past 30 years. David has practiced in Australia, the United Kingdom, Singapore, Malaysia, Indonesia, Japan, Korea, Hong Kong, Taiwan, and China, resulting in a strong knowledge of international markets. He was responsible for establishing ThomsonAdsett's Tokyo and Hong Kong studios in the mid-90s and has been instrumental in building the practice's international profile and securing work throughout Asia.

David is currently building upon ThomsonAdsett's international endeavors, having recently partnered with Borderless Healthcare Group to develop a revolutionary new suite of smart home design technologies, which are set to transform the burgeoning seniors living market in Asia.

Published International Papers: 'Innovative Project Solutions for a Global Aging Problem - From Quality Housing to Quality Living'. Hong Kong Housing Society Conference - 2008, 'Where we've come from, Lessons we've learnt, Where we've headed', Asia Silver Industry Forum Seoul, Korea.



**Chris Straw**  
Architect, Partner

Chris is the Managing Director for ThomsonAdsett who is actively involved in the continued education and development of future models for seniors living. He is also a Founding Board Member of CommonAge, an organisation focused on advancing the interests of older people throughout the Commonwealth by building capability and capacity in health and care services.

Chris is invested in the development of future models for aged care, focusing on emerging trends and the cultural and market shifts shaping this sector.

As Managing Director, Chris plays a pivotal role in shaping and defining ThomsonAdsett for the future, including leading the current rebranding of the business and gearing up the company to be agile and responsive to a rapidly changing environment.





### **Simon Drysdale**

Group Director  
Seniors Living

Simon has over 20 years of experience in architectural practice and has worked on projects valued from \$25k to over \$800m. He has managed many retirement living and residential aged care projects throughout Australia and abroad. Simon applies his learnings from his experience in the hotel, resort, and multi-residential sectors to his seniors living projects.

His skills cover work across diverse scopes of service, procurement and delivery methods. He has a wealth of knowledge and extensive experience in design, management, education and project research. A demonstrated commitment to quality design outcomes has resulted in many of Simon's projects receiving extensive accolades and awards.



### **Lynn Vandievoort**

National Design Lead

Lynn is a qualified, award-winning designer who has worked for several local and international practices on projects that span across every sector and scale. Her range and quality of work demonstrates her acumen for critical design thinking and best practices.

Lynn gained her architectural registration in Europe in 2010 where she was based until moving to Australia. Highly skilled in the design and management of projects, Lynn also has broad experience in concept and schematic design, contract administration, plus masterplanning and urban design for large development applications.

In her role as National Design Lead based in ThomsonAdsett's Brisbane studio, Lynn brings a passion for design excellence and highly efficient design management skills.



### **David Cao**

China Partner

David Cao is Thomson Adsett China Partner. He brings with him 19 years of project experience on Urban Physical Planning and Urban Design. He has successfully delivered projects in China, Canada, and Australia; from small site design to mega scale urban design and planning. His key interest and focus is on senior living planning and design, commercial design and residential planning.

David's depth of understanding of the Chinese design and planning perimeters, technical opportunities and Chinese funding mechanism allow him to rationalise innovative solutions while incorporating international best ideas.

David is also an Associate Professor at the School of Urban Design, Wuhan University; one of the top State University in China. He has been teaching Urban Design and Site Design since 2015.



## Contact

**David Lane**  
Chairman Emeritus, Partner,

p +61 7 3840 99250 / +61 418 783 642  
e david.lane@thomsonadsett.com

**David Cao**  
China Partner

p +86 137 0715 8976 / +61 424 338 976  
e david.cao@Thomsonadsett.com

Brisbane  
Cairns  
Melbourne  
Rockhampton  
Sydney



thomsonadsett.com